

MV ATLANTIC CITY



OWNERS

Reardon Smith Line Limited, Cardiff
Sir William Reardon Smith & Sons Limited, Managers

BUILT 1967

Fairfields (Glasgow) Ltd.

CLASS

Bulkcarrier
* 100 A1 strengthened for ore cargoes—
Numbers 2 & 6 holds may be empty

Call Sign G.T.W.A.
Official No. 308642

FULL SPECIFICATION

DESCRIPTION

Single steel deck single screw bulk carrier with engine and accommodation Aft, suitable for general bulk cargoes handled by Ship's own gear.

Seven hatches with hydraulically powered mechanical steel covers.

DIMENSIONS

Length overall	668' 2"	203.66 m
Length between perpendiculars	630' 0"	192.02 m
Breadth molded	95' 0"	28.955 m
Depth molded to upper deck	53' 6"	16.306 m
Summer freeboard draft	39' 6"	12.040 m
Corresponding deadweight	45810 tons	
Tons per inch immersion	129 tons	

TONNAGES

Gross	27,029.34 tons
Net	17,920.68 tons

MAIN MACHINERY

Clark-Sulzer 6RD90 6 cylinder producing 13,800 BHP @ 119 R.P.M.

SPEED/CONSUMPTION

About 14.5 knots on 45 tons I.F.O. per day at 1200 secs plus 2.5 tons diesel oil.

PORT CONSUMPTION

4 tons I.F.O. and 2 tons diesel oil per. 24 hours working.

PROPELLER

Working: Stone Manganese Marine Ltd., right handed
4 blades. Diameter 19.75 ft. pitch 14.48 ft.
of Manganese bronze.

Spare: Andrew Strang & Co. Ltd., right handed
with 4 blades. Diameter 17.50 ft. pitch
15.40 ft. of cast iron.

CARGO GEAR

14 x 10 Ton derricks and 2 x 3 Ton store derricks.

HOLD CAPACITIES

1.	156,771	Wing tank	
2.	260,354		36,024
3.	289,154		39,460
4.	313,367		42,748
5.	264,544		36,172
6.	313,025		42,748
7.	255,804		35,042
	<u>1,853,019</u>		<u>232,194 cu.ft.</u>

Total 2,085,213 cu ft. for grain.

HATCH COVERS

"ASCA" Chain operated compact folding metal hatch covers driven by "Staffa" hydraulic motors.

HATCHES

1.	27'0" x 45'0"	Hold lengths	49'6"
2.	36'0" x 45'0"		66'0"
3.	43'6" x 45'0"		72'0"
4.	48'0" x 45'0"		78'0"
5.	36'0" x 45'0"		66'0"
6.	48'0" x 45'0"		78'0"
7.	36'0" x 45'0"		66'0"

FUEL CAPACITY

Heavy oil	98% full	2337 tons @ 39 cu.ft. per ton
Diesel oil	98% full	244 tons @ 42 cu.ft. per ton

WATER BALLAST CAPACITY

16,373 tons using available hopper double bottom upper wing and peak tanks full.

FEATURES

CO₂ system to cargo holds and machinery spaces. Upper wings at 2, 3, 4, 5, 6 & 7 are suitable for carriage of grain although all upper wings are primarily designed to take water ballast.

NAVIGATIONAL EQUIPMENT

Magnetic compass with reflector binnacle.
Gyro compass by Arma-Brown with Brown auto helmsman
Decca Radar true motion 626
Direction finder, Marconi "Lodestar" automatic
Loran Furono
Echo sounder Marconi Contour & Metron III
V.H.F. Marconi "Argonaut"
Automatic fog signals by air and electrical whistles

RADIO INSTALLATION

Based on Marconi "Crusader" with Marconi Salvor II emergency transmitter and Marconi "Atalanta", "Monitor" and Redifon R 408 receivers. This installation gives world wide telegraphic and telephonic communication.

MOORING WINCHES & WINDLASS

2 Pusnes type cable lifters driven by Siemens motors
4 Electric self tensioning winches
1 Electric capstan (all of Pusnes manufacture)

ANCHORS

Three stockless anchors by W. L. Byers & Co. Ltd. each about 141 cwt.

AUXILIARY MACHINERY

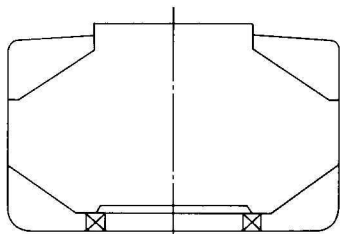
Generator: 3 Rustons & Hornsby 6 cylinder APC7 each giving 620 B.H.P. @ 720 R.P.M.
Alternators: 3 Siemens Schuckert B 16 Producing 425 Kw at 440 V 3 phase 60 cycles Alternating current

2 Boilers by Marshall and Anderson Ltd., Vertical "P" type producing:
(1) 4000 p.p.h. @ 100 p.s.i. on engine exhaust or oil
(2) 1750 p.p.h. @ 100 p.s.i. on oil

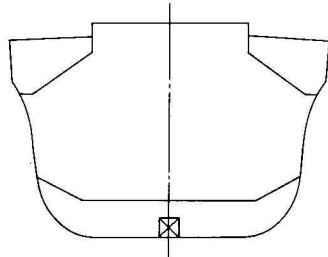
Ballast Pumps: 2 Hamworthy verticle self priming centrifugal delivering 1000 T.P.H. Against 30 p.s.i.
2 Bilge & G.S. pumps Hamworthy Dolphin vertical self priming 90/140 T.P.H. against 200/60 feet head.

STEERING GEAR

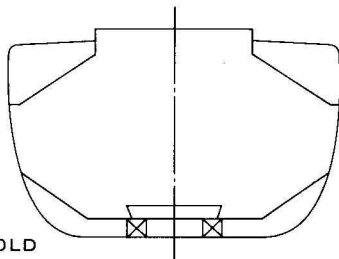
4 Ram electro hydraulic system by Brown Bros.



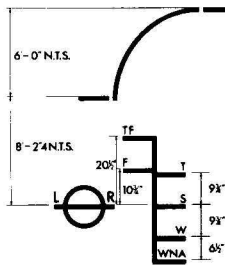
SECTION THRO'
No. 1 HOLD



SECTION THRO' No. 7 HOLD

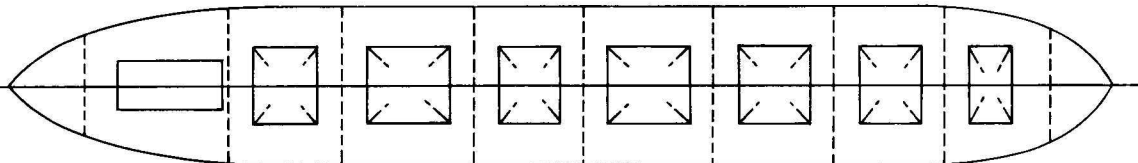
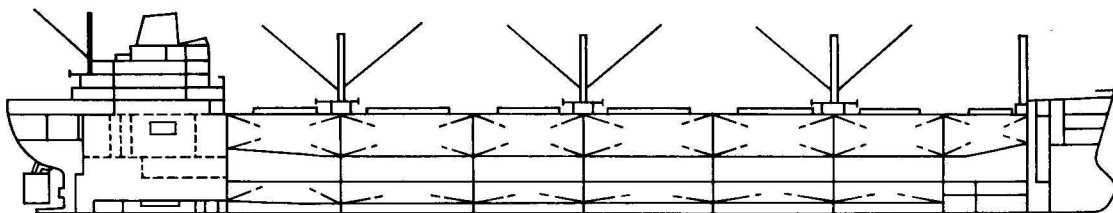


SECTION THRO'
MIDSHIP HOLDS



NOTE: BECAUSE OF THE RADIUS GUN-WALE ON THIS SHIP, THE FREEBOARD FIGURES SHOWN ON THE CERTIFICATE ARE MEASURED FROM A "DECK LINE" MARKED ON THE SHIP'S SIDE AT 6'0" BELOW THE LINE OF THE STEEL DECK.

MV ATLANTIC CITY



DEADWEIGHT SCALE									
DISPLAC'T TONS SW	DEADWT TONS SW	DRAUGHT IN FEET	FREEBD FROM STEEL DECK	TONS PER INCH	MCT 1" FT-TONS	LCB FROM 0	LCF FROM 0	TRANSVERSE METACENTRE FEET	
59312		42	12	130.5	5953	10.79F	4.20A	39.71	
57749	48000	41	13	130.0	5875	11.19F	4.00A	39.52	
	47000								
56193	46000	40	14	129.3	5723	11.60F	3.86A	39.35	
54646	45000	39	15	128.6	5712	12.03F	3.28A	39.20	
53106	44000	38	16	128.0	5631	12.47F	2.77A	39.08	
	43000								
51574	42000	37	17	127.3	5552	12.92F	2.20A	39.00	
50050	41000	36	18	126.7	5476	13.37F	1.56A	38.95	
	40000								
48533	39000	35	19	126.1	5404	13.83F	0.86A	38.93	
47024	38000	34	20	125.5	5334	14.30F	0.10A	38.96	
45522	37000	33	21	124.8	5282	14.76F	0.73F	39.02	
44028	36000	32	22	124.2	5184	15.22F	1.65F	39.12	
	35000								
42542	34000	31	23	123.5	5099	15.67F	2.69F	39.26	
41063	33000	30	24	122.9	5014	16.11F	3.88F	39.46	
39592	32000	29	25	122.4	4940	16.55F	5.55F	39.71	
	31000								
38125	30000	28	26	121.9	4875	16.98F	6.19F	40.01	
36666	29000	27	27	121.3	4818	17.39F	7.06F	40.39	
	28000								
35213	27000	26	28	120.8	4767	17.79F	7.93F	40.85	
33766	26000	25	29	120.3	4718	18.19F	8.78F	41.38	
	25000								
32325	24000	24	30	119.0	4672	18.59F	9.63F	42.00	
30888	23000	23	31	119.5	4626	19.00F	10.47F	42.75	
29456	22000	22	32	119.1	4582	19.40F	11.30F	43.60	
	21000								
28030	20000	21	33	118.7	4539	19.79F	12.12F	44.56	
26608	19000	20	34	118.3	4499	20.18F	12.94F	45.66	
	18000								
25191	17000	19	35	117.9	4459	20.57F	13.76F	46.97	
23778	16000	18	36	117.5	4421	20.95F	14.58F	48.48	
22371	15000	17	37	117.0	4383	21.33F	15.38F	50.21	
20969	14000	16	38	116.6	4345	21.71F	16.17F	52.20	
19572	13000	15	39	116.2	4305	22.08F	16.95F	54.58	
	12000								
18181	11000	14	40	115.8	4263	22.45F	17.73F	57.31	
16794	9000	13	41	115.3	4218	22.82F	18.49F	60.56	
	8000								
15414	7000	12	42	114.8	4166	23.18F	19.23F	64.42	
14040	6000	11	43	114.2	4115	23.53F	19.96F	69.05	
12674	5000	10	44	113.5	4057	23.88F	20.69F	74.97	
	4000								
11317	3000	9	45	112.7	3991	24.22F	21.40F	81.95	
9970	2000	8	46	111.7	3918	24.52F	22.10F	91.20	
	1000								
8637	0	7		110.5	3834	24.85F	22.79F	101.20	

FREEBOARD PARTICULARS				
SEASON	DRAUGHT	FREEBOARD AS CERT	DISPLAC'T	DEADWT IN TONS
TROPICAL FRESH	41'-2 1/2"	6'-5 1/2"	56620	47010
FRESH	40'-4 1/2"	7'-3 1/2"	55380	45770
TROPICAL	40'-3 1/2"	7'-4 1/2"	56680	47070
SUMMER	39'-6"	8'-7 1/2"	55420	45810
WINTER	38'-8 1/2"	9'-0"	54160	44550